

DECEMBER 5, 2024

Community Meeting



LOYOLA
UNIVERSITY CHICAGO



• Agenda

- Introductions
- Summary of Loyola needs
 - Academic space
 - Residential space
 - Recreational space
- Summary of Engagement Results
 - Pop-Ups
 - Interactive Map
 - Survey
- Uniting Phase & Strategic Considerations
 - Visionary Creativity
 - Transportation Opportunities
 - Timing - Set it up for short term uses vs long term uses
- Development Opportunity Charrette
 - West Campus
 - South Campus
- Wrap up / Next Steps

Team

Loyola Team – Forward Facing



Jennifer Clark
*Associate Vice President
Neighborhood Initiatives*



Cecilia Rodriguez
*Director of Neighborhood
Initiatives*



Summur Roberts
*Director of Neighborhood
Initiatives/Communication*



Patrick Brawley
*University Architect &
Assistant Vice President
Campus Planning*

Loyola/RDG Support Team



Kana Henning
*Vice President for
Facilities and
Campus
Management*



Jonathan Martin
*Project Manager
Campus Planner*



**Flavia Rodrigues
Hauss**
Urban Planner



Doug Adamson
Landscape Architect

LOYOLA LAKE SHORE CAMPUS PRIMARY NEEDS



ACADEMIC
SPACE



RESIDENTIAL
SPACE



RECREATION
SPACE

• Campus Plan Overview

GUIDING PRINCIPLES

These Guiding Principles, distilled through the extensive planning process, establish for Loyola University Chicago a set of values to guide the effectiveness and priority of capital development or acquisitions to execute this vision of this master plan.



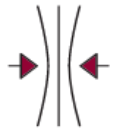
STUDENT SUCCESS

“Holistic Support Ecosystem” - Prioritize student success by ensuring seamless access to campus, resources, faculty, and staff, creating a supportive ecosystem that empowers students to thrive academically and personally.



ACADEMIC EXCELLENCE

“Pinnacle Learning Environment” - Foster top-tier teaching and learning environments across all disciplines, consistently pursuing academic excellence that empowers students, and prepares them for a dynamic future.



RESILIENCY

“Future-Ready Adaptability” - Cultivate a resilient campus, adept at managing future challenges, by optimizing institutional assets and creating an adaptable environment that aligns with evolving needs and advances institutional sustainability.



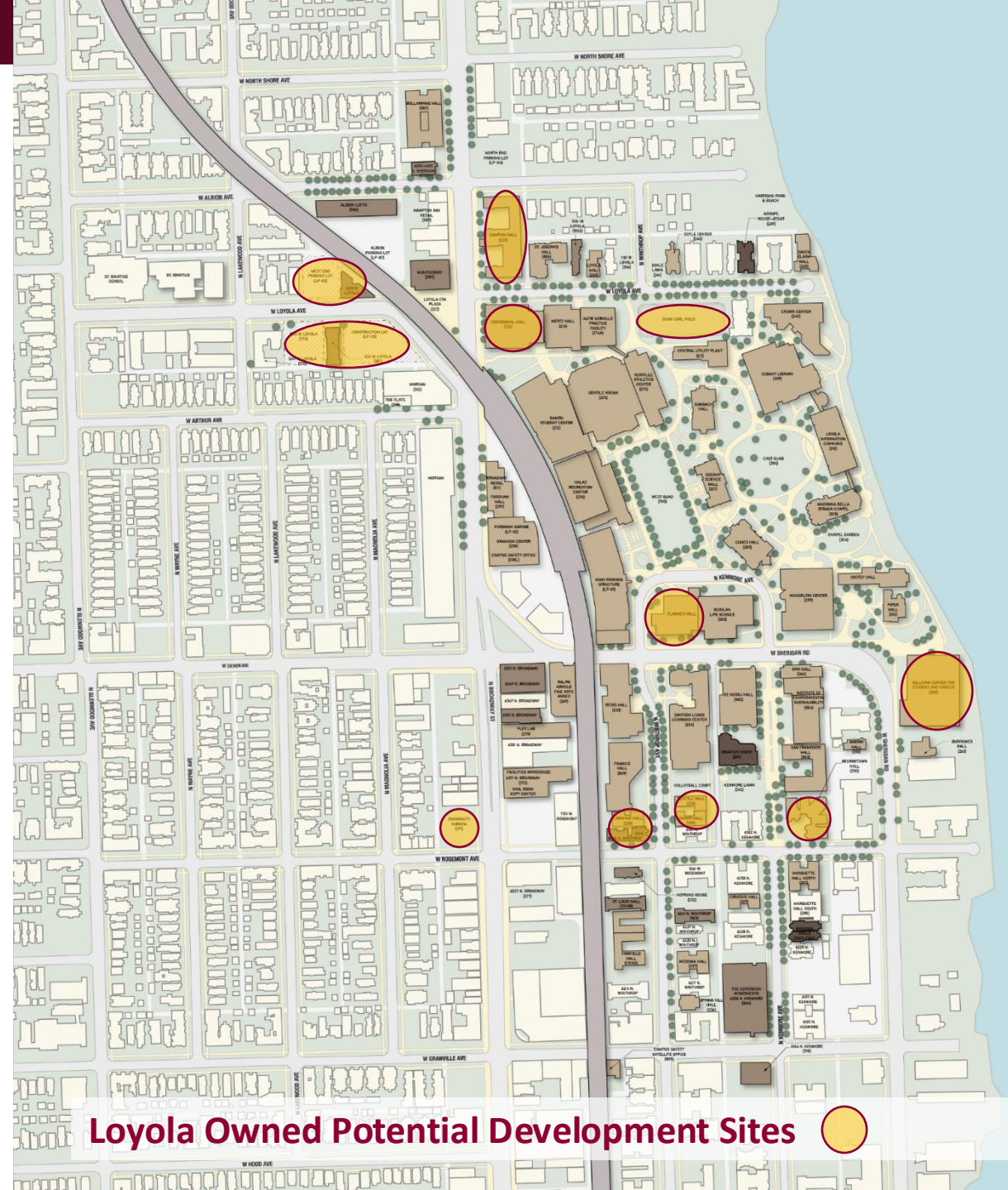
COLLABORATION / INTEGRATION

“Interconnected Solutions for Impact” - Promote an inter-professional model of multidisciplinary collaboration, fostering integrated solutions that transcend traditional boundaries to address complex challenges and contribute to broader societal impact.



JESUIT IDENTITY

“Embodied Jesuit & Catholic Legacy” - Embrace and showcase our Jesuit and Catholic identity, both in values and physical presence, creating a destination that reflects our rich heritage and commitment to holistic education.



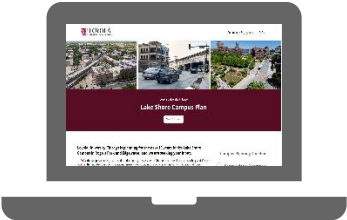
Loyola Owned Potential Development Sites

COMMUNITY ENGAGEMENT

SUMMARY OF RESULTS FROM ENGAGEMENT OPPORTUNITIES

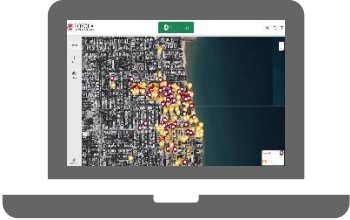
COMMUNITY ENGAGEMENT SUMMARY OF RESULTS

PROJECT WEBPAGE



5,464 Visits
3,078 Unique Users

INTERACTIVE MAP



243 Comments

COMMUNITY SURVEY



609 Responses

Provided in multiple languages:
English, Spanish, Filipino & Arabic

SMALL GROUPS/ POP UP EVENTS



18 Events



INCLUSIVITY

- **PUBLIC MEETINGS HELD VIRTUALLY**
- **SMALL GROUP MEETINGS IN PERSON**
- **PUBLIC MEETINGS WITH SPANISH TRANSLATION**
- **SURVEYS AVAILABLE IN 4 LANGUAGES**
- **PAPER SURVEYS AVAILABLE AT 6 LOCATIONS**

49th Ward

48th Ward

Edgewater Library

GROW Progresando

Ismaili Center

Centro Romero

PUBLIC EVENTS

July 16
Schreiber
Park
Event

July 23
Public
Kick Off
Meeting

August 2
First Friday
at CTA
Station

August 6
Public Kick-
Off
Meeting

August 17
Glenwood
Ave Arts
Fest

August 18
Glenwood
Ave Arts
Fest

August 24
49th Ward
Back to
School Bash

Sept 1
Glenwood
Sunday
Market

Sept 5
Loyola Family
Outdoor
Movie

Sept 6
First Friday
CTA Plaza

Sept 9
Edgewater
Monday
Market



Dec 20, 2023
First Meeting
with Elected
Officials

Dec 21, 2023
Community
Focus Group

Jan 10, 2024
Community
Focus Group

February 7
RPBA P&D
Committee

April 2
Meeting
with Elected
Officials

August 6
Meeting
with Elected
Officials

August 11
ENN-NEON
Block Club

August 27
NEBA Block
Club

Sept 17
Climate
Action Plan
Public
Meeting

SMALL GROUPS

COMMUNITY ENGAGEMENT SMALL GROUPS / POP-UPS



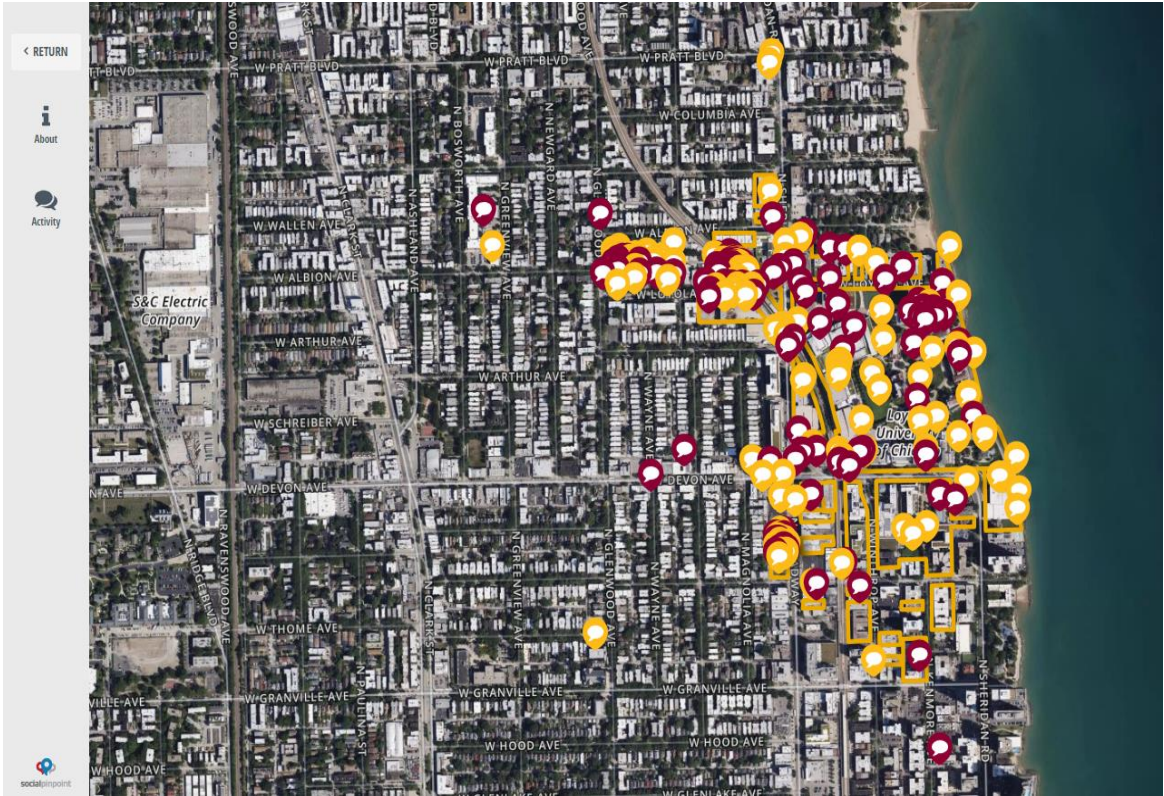
- #1 Environment and Climate was chosen as one of the top three priorities at 5 of 8 events.
- #2 Safety and Security was chosen as one of the top three priorities at 4 of 8 events.
- #3 Schools and Education was chosen as one of the top three priorities at 4 of 8 events.



COMMUNITY ENGAGEMENT INTERACTIVE MAP



Drag to comment > My Idea My Concern



5,464 Total Visits

125 Unique Stakeholders

243 Comments

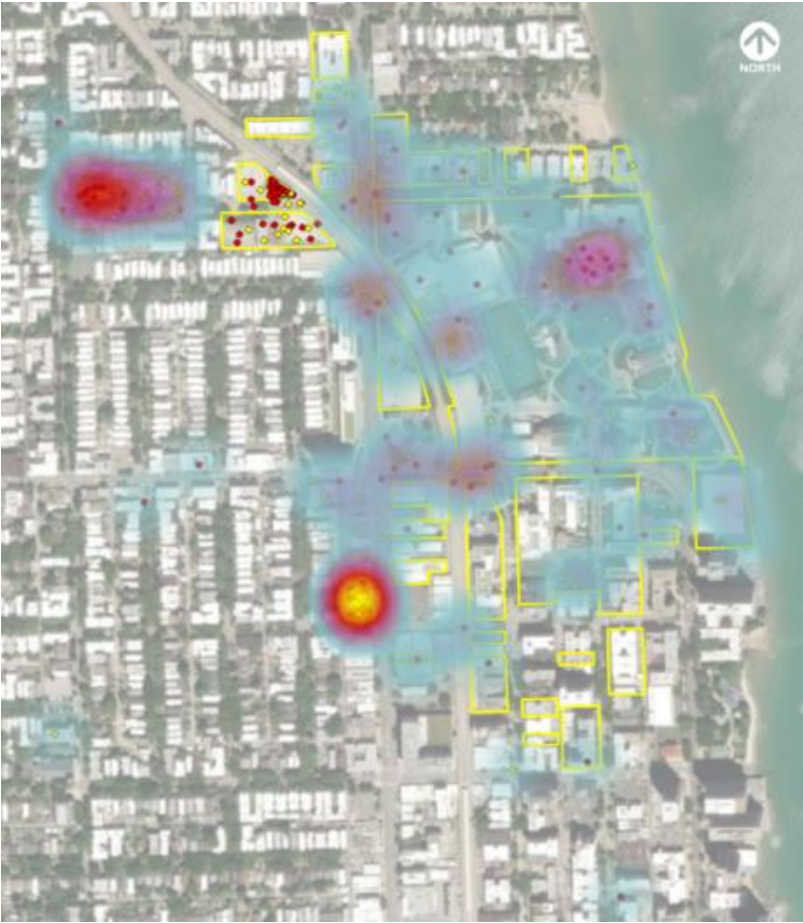
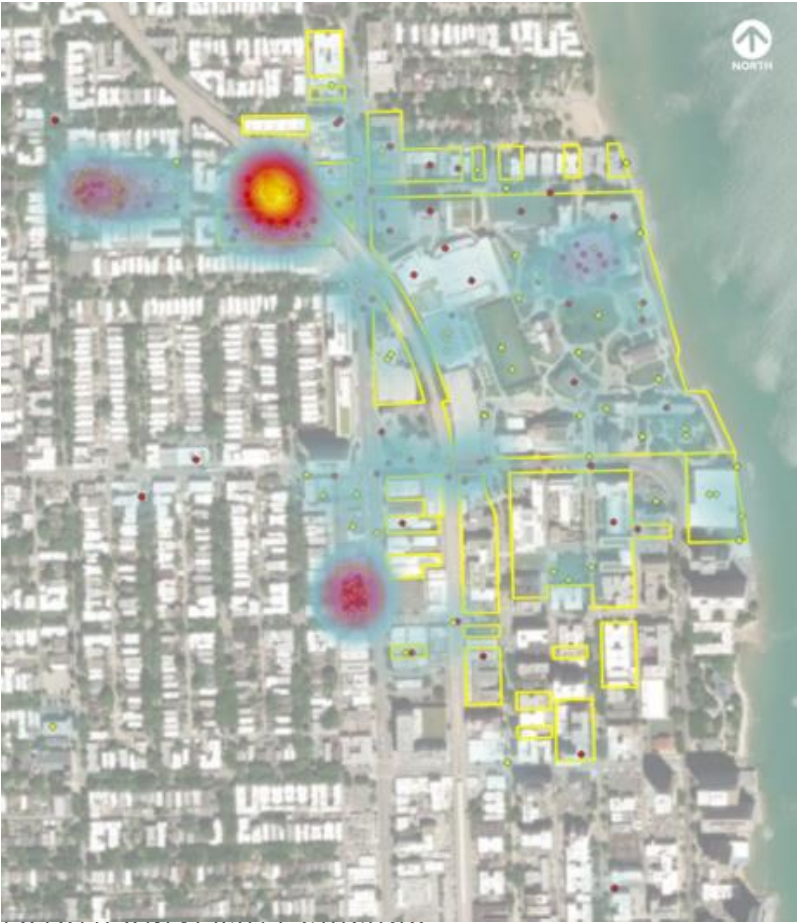
121 Ideas

122 Concerns

COMMUNITY ENGAGEMENT INTERACTIVE MAP



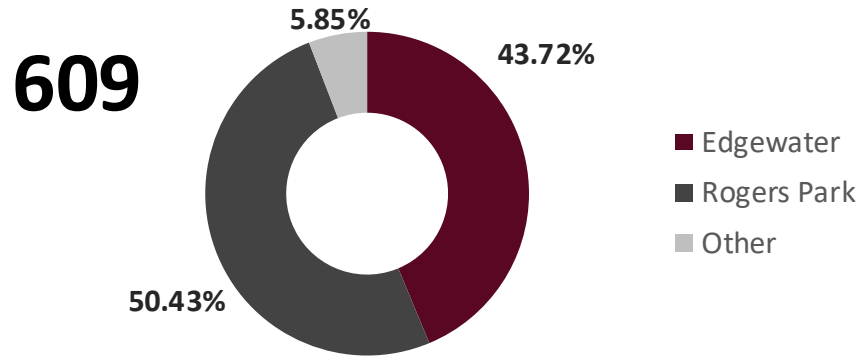
HEAT MAP: AREAS WITH THE MOST COMMENTS



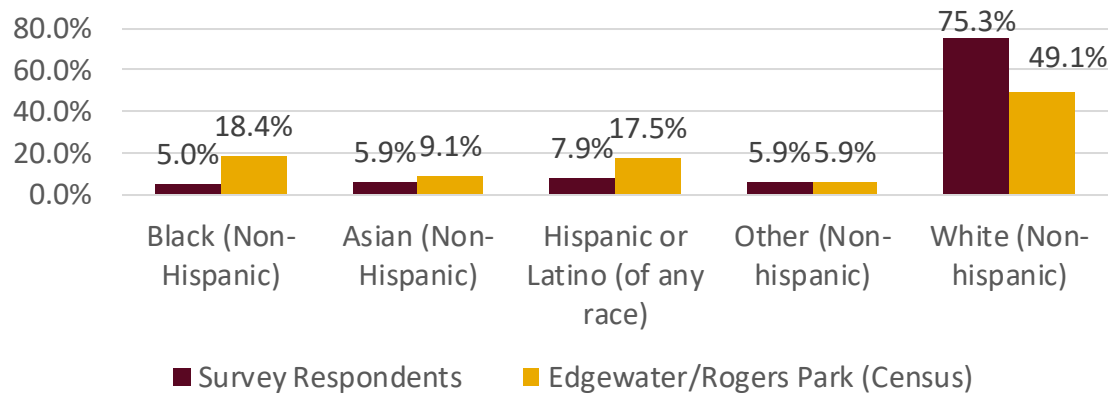
COMMUNITY ENGAGEMENT INTERACTIVE MAP



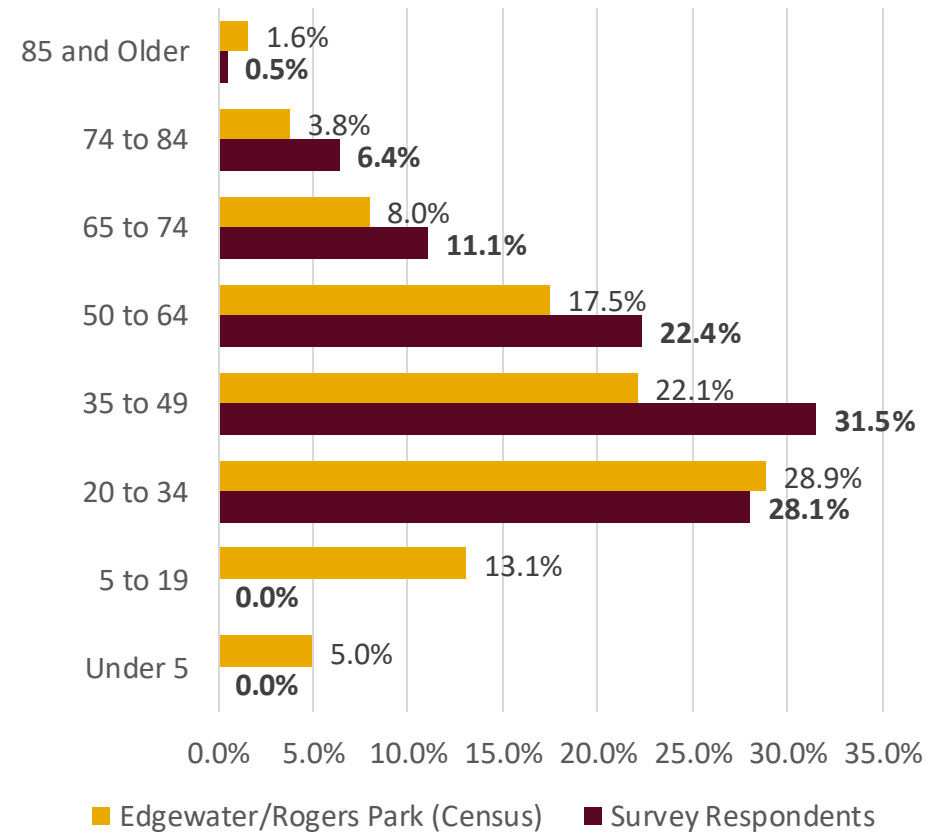
NUMBER OF SURVEY RESPONDENTS



RACE OF SURVEY RESPONDENTS



AGE OF SURVEY RESPONDENTS



COMMUNITY ENGAGEMENT SURVEY



- Rank changes or improvements based on how much the community believe it would enhance the **QUALITY OF LIFE** in the community over the next 10 years. *(1 being the least important and 9 being the most important)*



COMMUNITY ENGAGEMENT SURVEY & MAP ACTIVITY



MAIN THEMES IDENTIFIED IN SURVEY COMMENTS AND INTERACTIVE MAPPING ACTIVITY



Safety and Security

- Better safety measures for pedestrians and cyclists around campus, including more police presence to reduce crime.
- Improve viaduct lighting, clearer crosswalk signals, and traffic calming measures on Sheridan to boost community safety.



Green Spaces, Parks and Recreation Facilities

- Donated community garden space is important, valued for community engagement, mental well-being, and sustainability.
- Enhance and creatively utilize green spaces and recreational facilities for both students and the community.



Housing and Affordable Housing

- More transparency around how Loyola manages its real estate and to make better use of existing properties.
- Concern that Loyola's property acquisitions are driving up rent and making housing unaffordable.



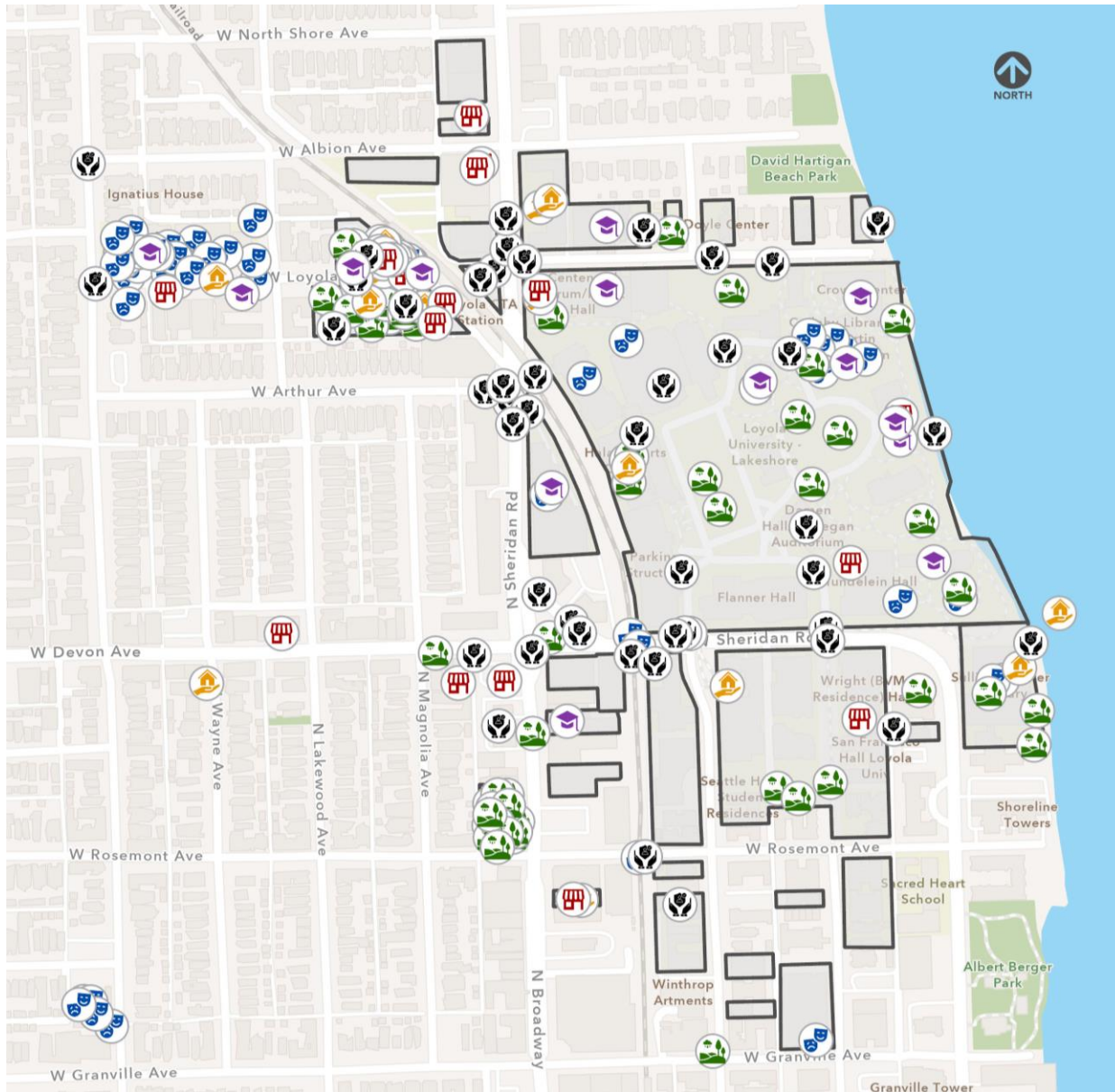
Arts and Cultural Venues

- Strong support for preserving local arts spaces and incorporating art initiatives in future development.
- Emphasis on collaborating with the community on cultural projects to maintain neighborhood artistic and cultural vibrancy.



Restaurants and Retail

- Prioritize local independent businesses over chain restaurants, fostering spaces that encourage social interaction and collaboration with the neighborhood.
- Improved planning for attractive buildings and support for events, avoiding gentrification and maintaining community character.



LOYOLA UNIVERSITY CHICAGO



MAIN THEMES IDENTIFIED IN SURVEY COMMENTS AND INTERACTIVE MAPPING ACTIVITY

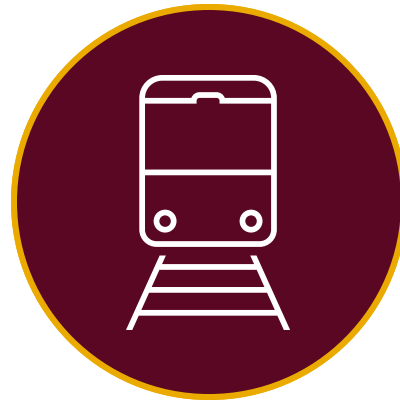
 <p>Safety and Security</p> <ul style="list-style-type: none"> • Better safety measures for pedestrians and cyclists around campus, including more police presence to reduce crime. • Improve viaduct lighting, clearer crosswalk signals, and traffic calming measures on Sheridan to boost community safety. 	 <p>Green Spaces, Parks and Recreation Facilities</p> <ul style="list-style-type: none"> • Donated community garden space is important, valued for community engagement, mental well-being, and sustainability. • Enhance and creatively utilize green spaces and recreational facilities for both students and the community. 	 <p>Housing and Affordable Housing</p> <ul style="list-style-type: none"> • More transparency around how Loyola manages its real estate and to make better use of existing properties. • Concern that Loyola's property acquisitions are driving up rent and making housing unaffordable. 	 <p>Arts and Cultural Venues</p> <ul style="list-style-type: none"> • Strong support for preserving local arts spaces and incorporating art initiatives in future development. • Emphasis on collaborating with the community on cultural projects to maintain neighborhood artistic and cultural vibrancy. 	 <p>Restaurants and Retail</p> <ul style="list-style-type: none"> • Prioritize local independent businesses over chain restaurants, fostering spaces that encourage social interaction and collaboration with the neighborhood. • Improved planning for attractive buildings and support for events, avoiding gentrification and maintaining community character.
--	--	---	---	---

COMMUNITY ENGAGEMENT INTERACTIVE MAP SUMMARY

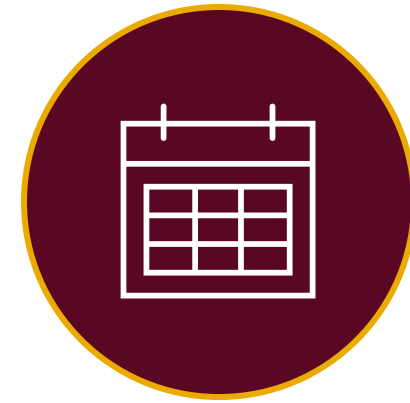
UNITING PHASE & STRATEGIC CONSIDERATIONS



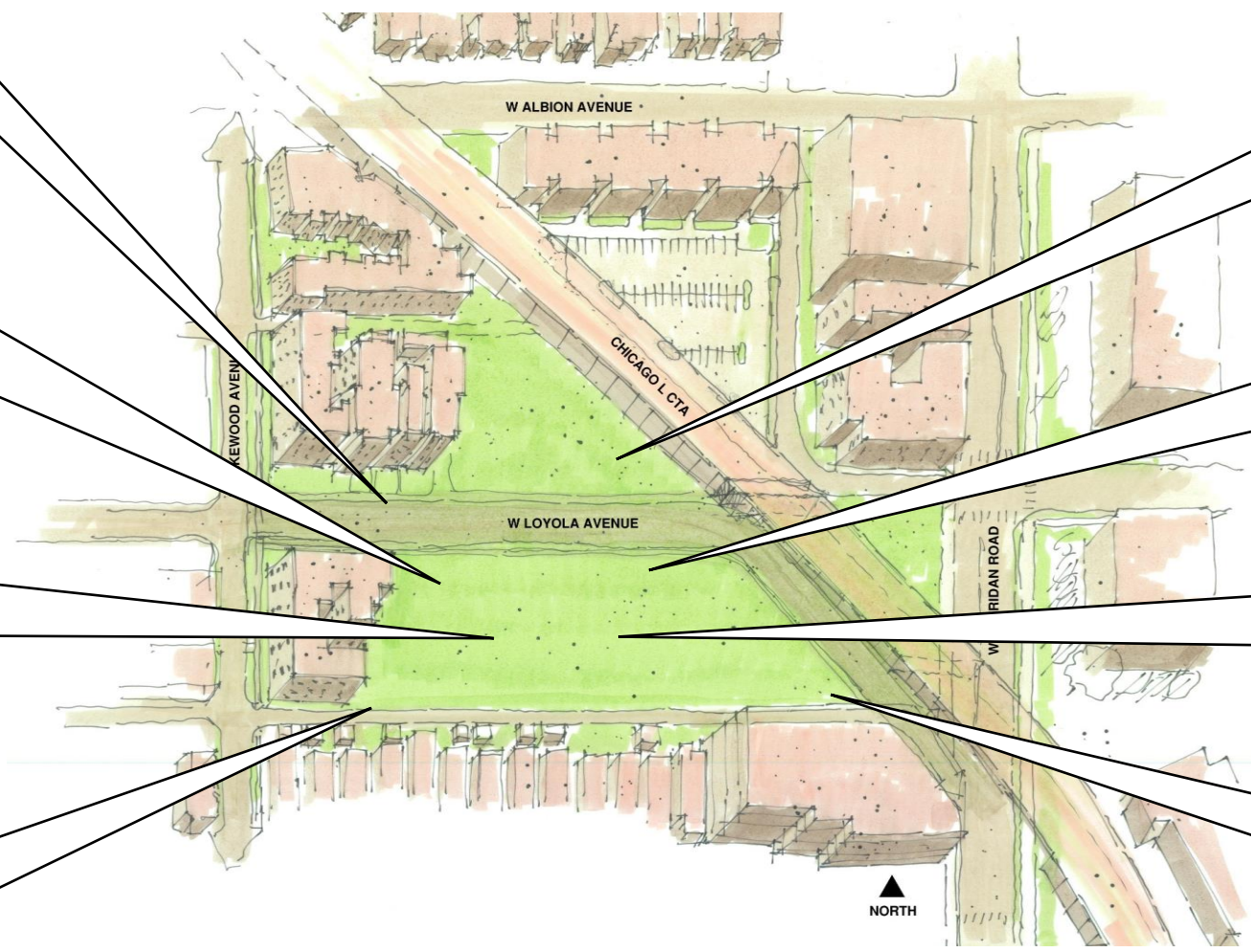
VISIONARY
CREATIVITY



TRANSPORTATION
OPPORTUNITIES



TIMING



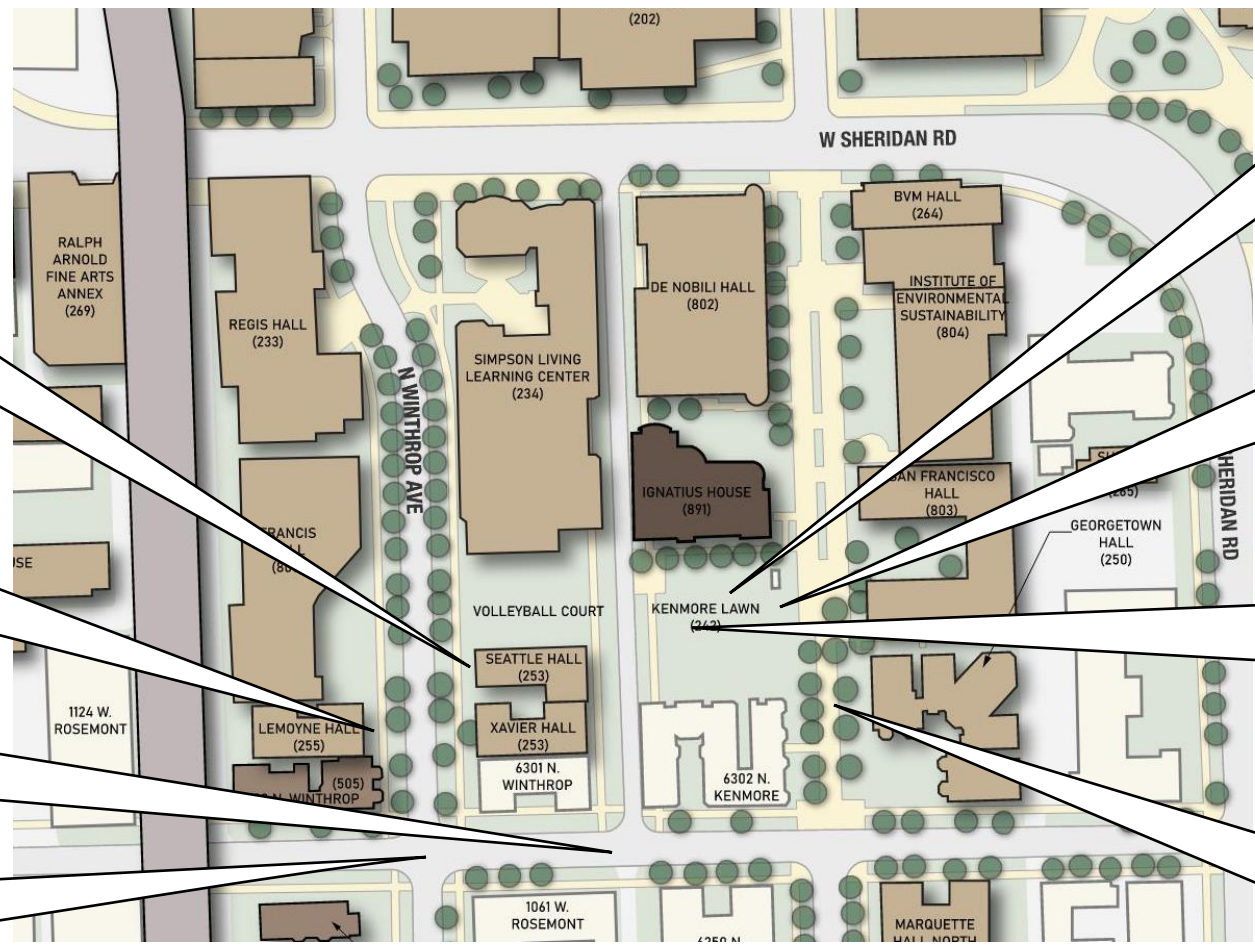
Key Ideas Across Groups:

Group A:

- Transform gravel lots into green spaces open to the public.
- Possible closure of Loyola Avenue to create a unified community space.
- Suggested amenities: Greenspace, climbing walls, pickleball courts, porch-type swings, and small support buildings.

Group B:

- Focused on improving pedestrian safety and traffic flow.
- Suggestion to replace parallel parking with angled parking on nearby streets.
- Enhance aesthetics by extending Loyola's beautification efforts to adjacent properties.



Key Ideas Across Groups:

Group C:

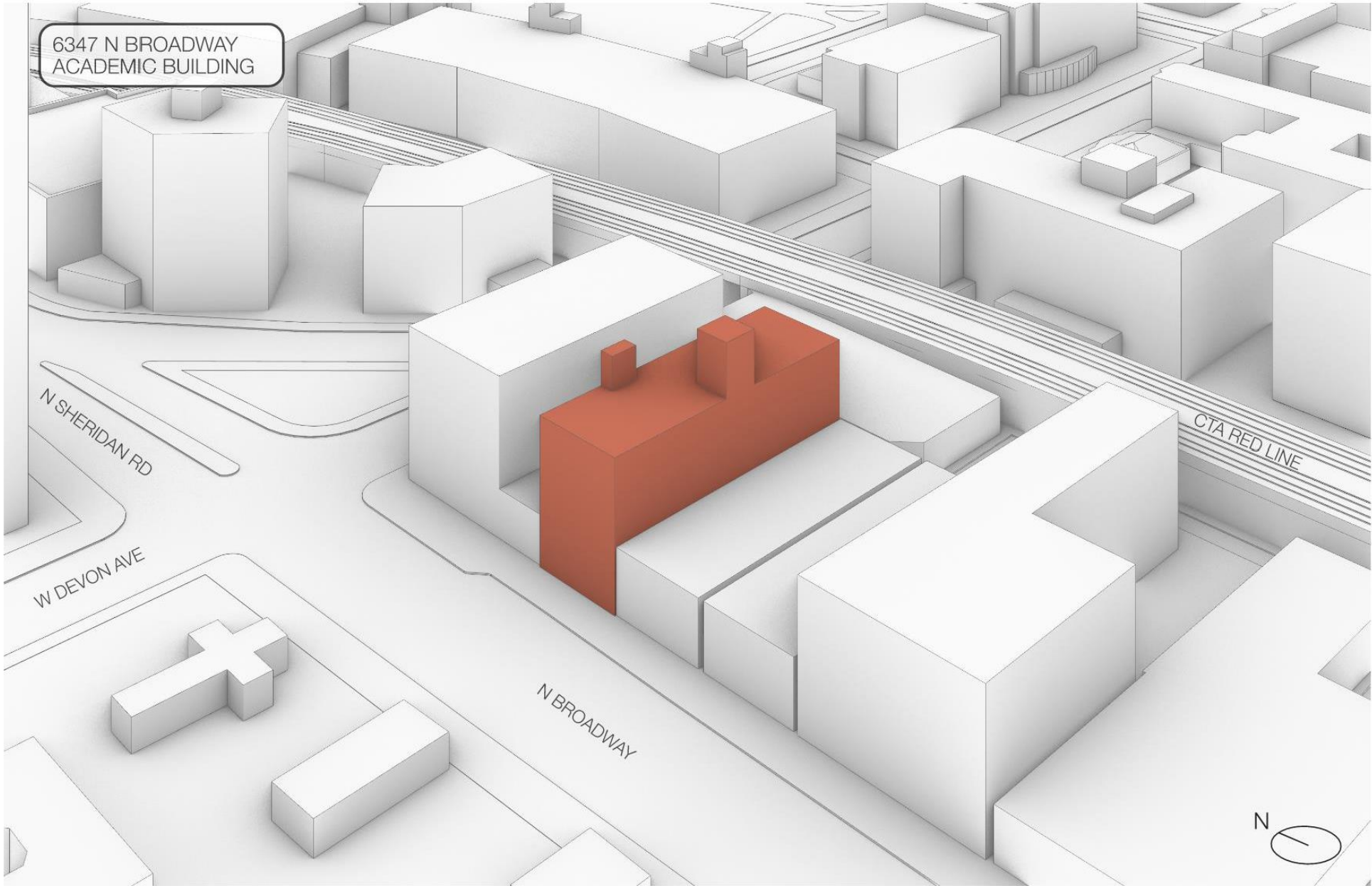
- Emphasis on maintaining and relocating the community garden if development occurs.
- Advocated for more public amenities, such as bus stops and restaurants.
- Highlighted safety concerns for pedestrians, particularly seniors, along Sheridan Road.

ON THE BOARDS

WHAT WE PLAN TO BRING FORWARD IN 2025



LOYOLA
UNIVERSITY CHICAGO



6347 N BROADWAY
ACADEMIC BUILDING

N SHERIDAN RD

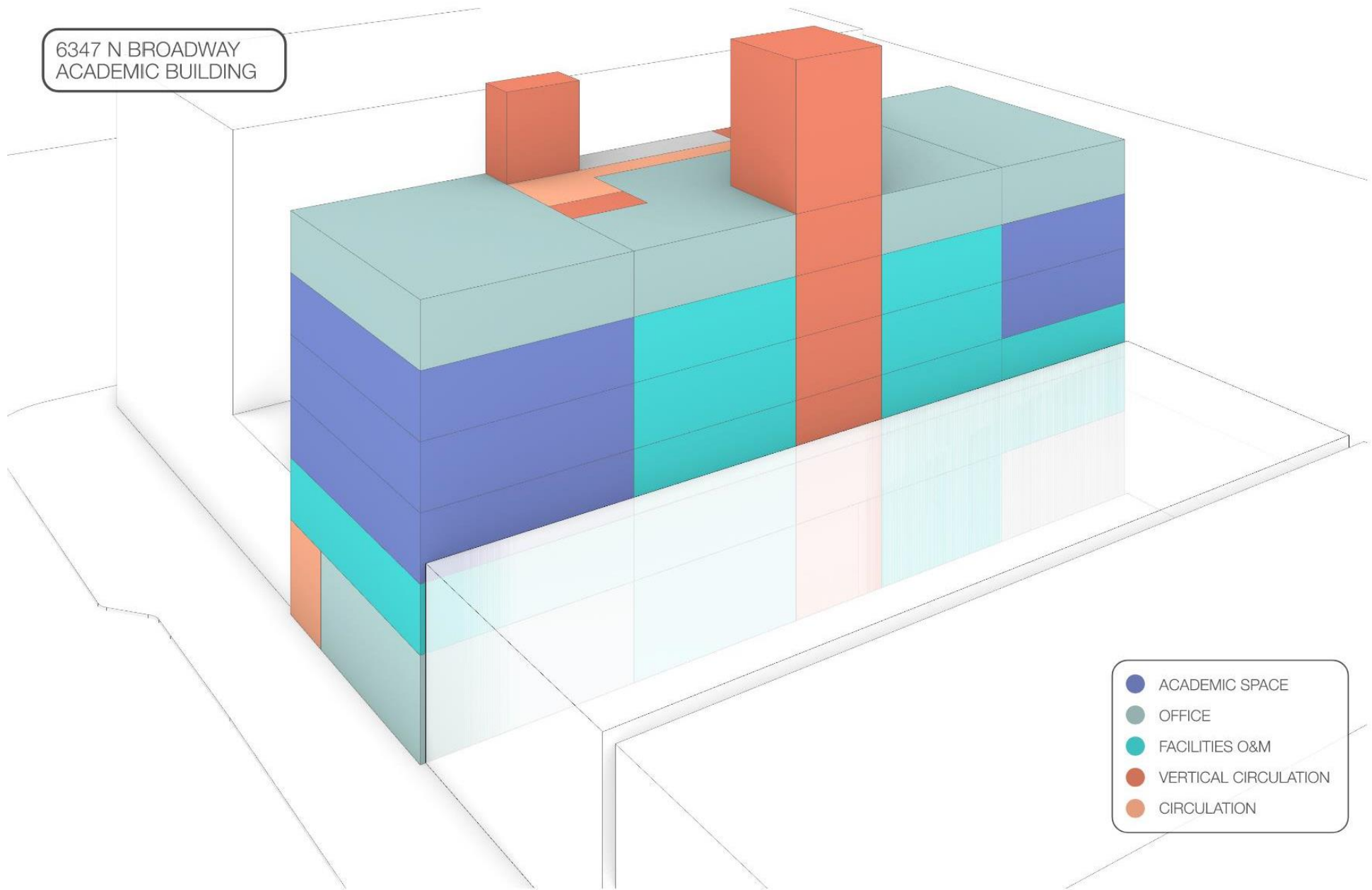
W DEVON AVE

CTA RED LINE

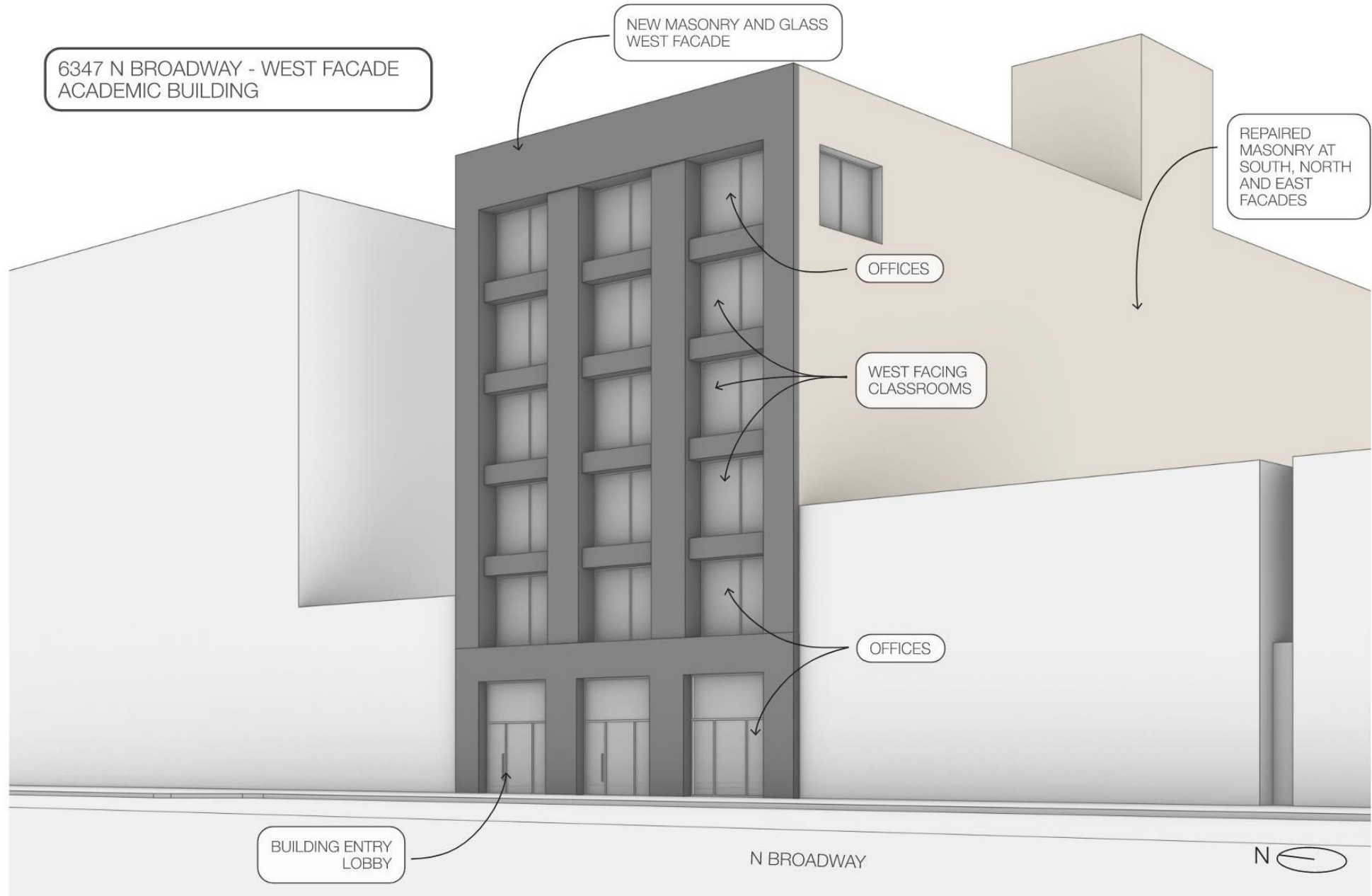
N BROADWAY

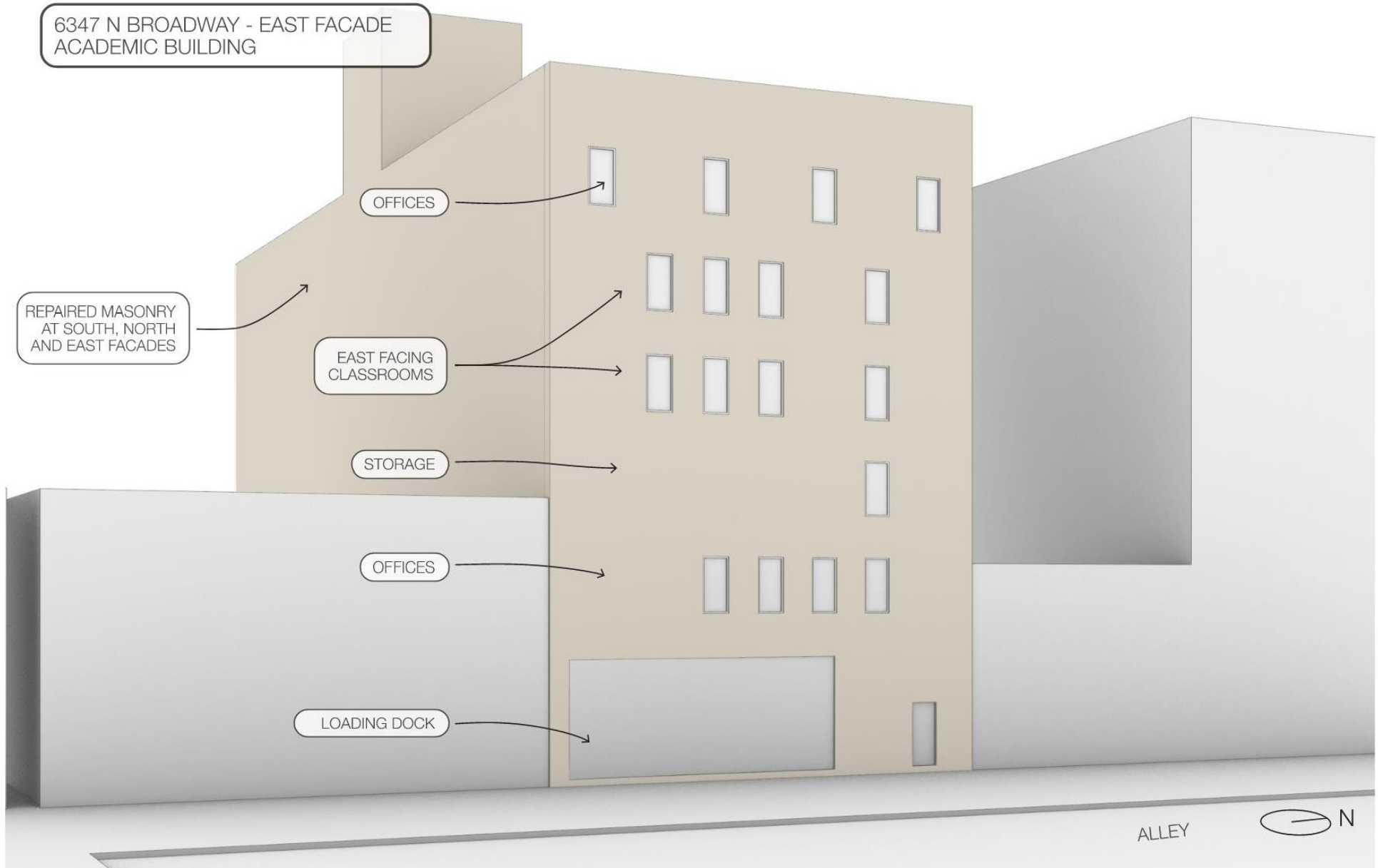


6347 N BROADWAY
ACADEMIC BUILDING



- ACADEMIC SPACE
- OFFICE
- FACILITIES O&M
- VERTICAL CIRCULATION
- CIRCULATION





6347 N BROADWAY - EAST FACADE
ACADEMIC BUILDING

OFFICES


REPAIRED MASONRY
AT SOUTH, NORTH
AND EAST FACADES

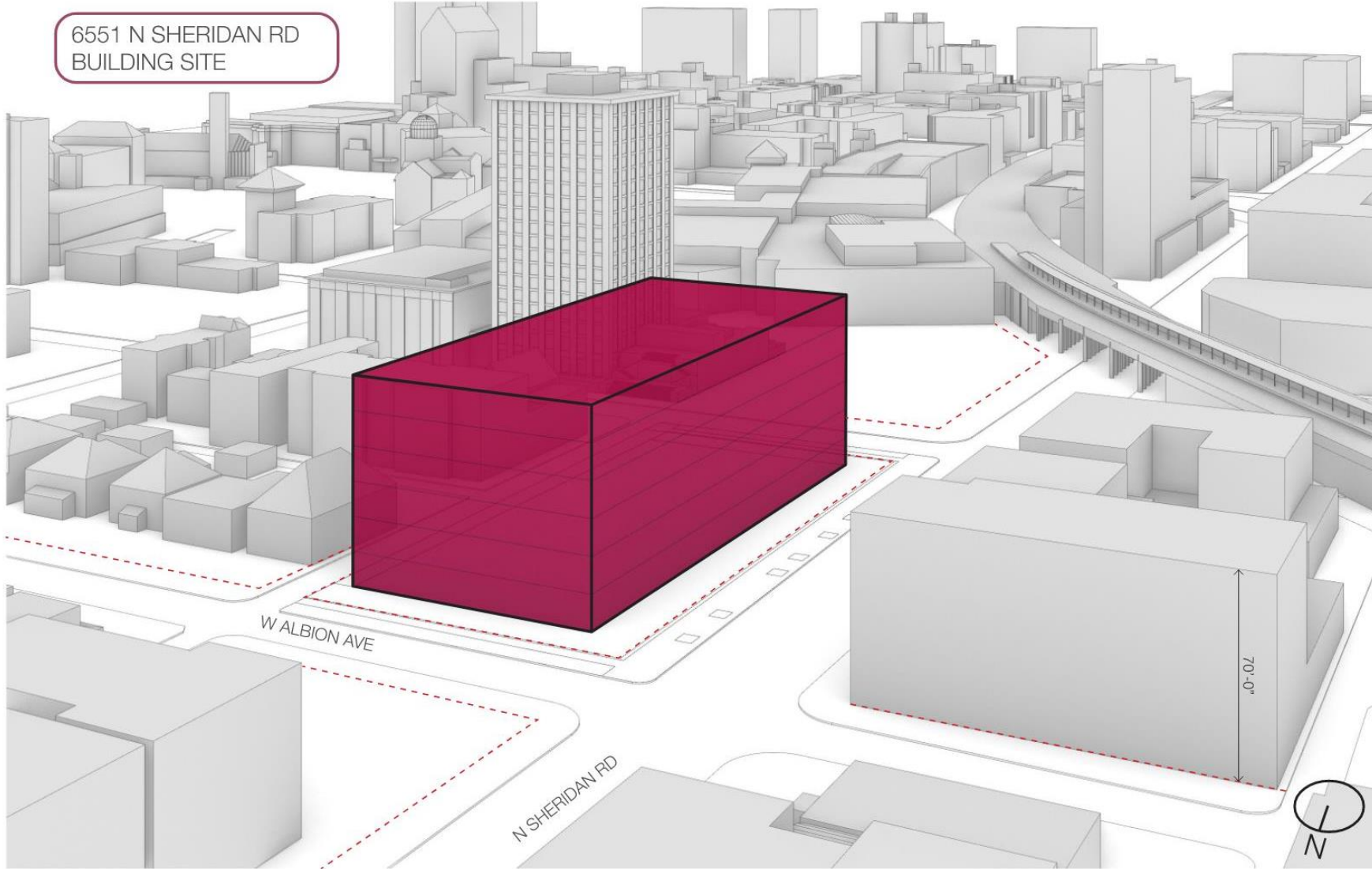
EAST FACING
CLASSROOMS

STORAGE

OFFICES

LOADING DOCK

ALLEY 



6551 N SHERIDAN RD
BUILDING SITE

W ALBION AVE

N SHERIDAN RD



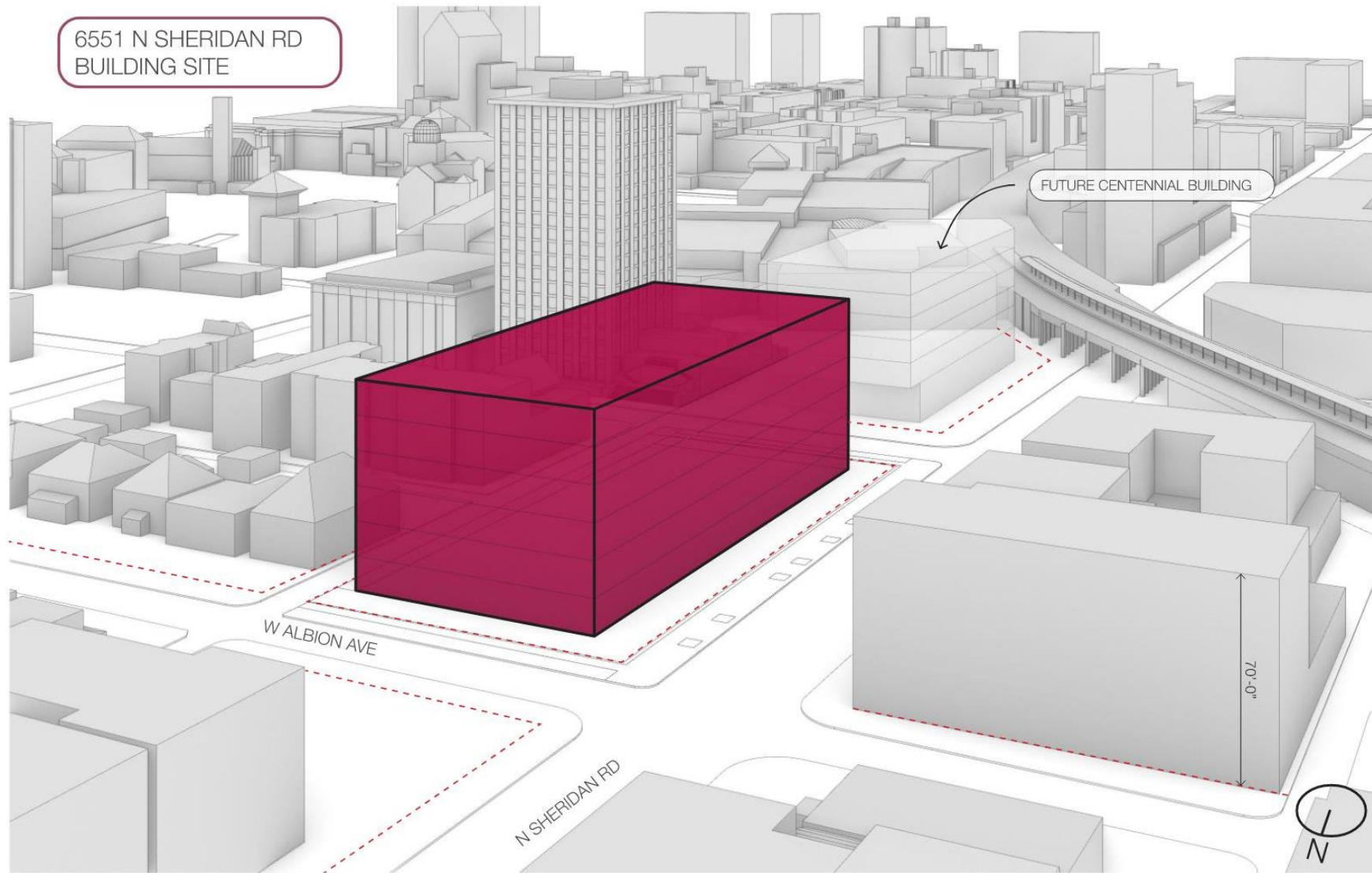
MAX FAR

196,000 GSF
6 FLOORS

SETBACK FOOTPRINT
32,400 GSF

90'-0" HEIGHT

ROOFTOP EQUIPMENT
AND OPTIONAL ROOFTOP
SCREEN NOT SHOWN



6551 N SHERIDAN RD
BUILDING SITE

FUTURE CENTENNIAL BUILDING

W ALBION AVE

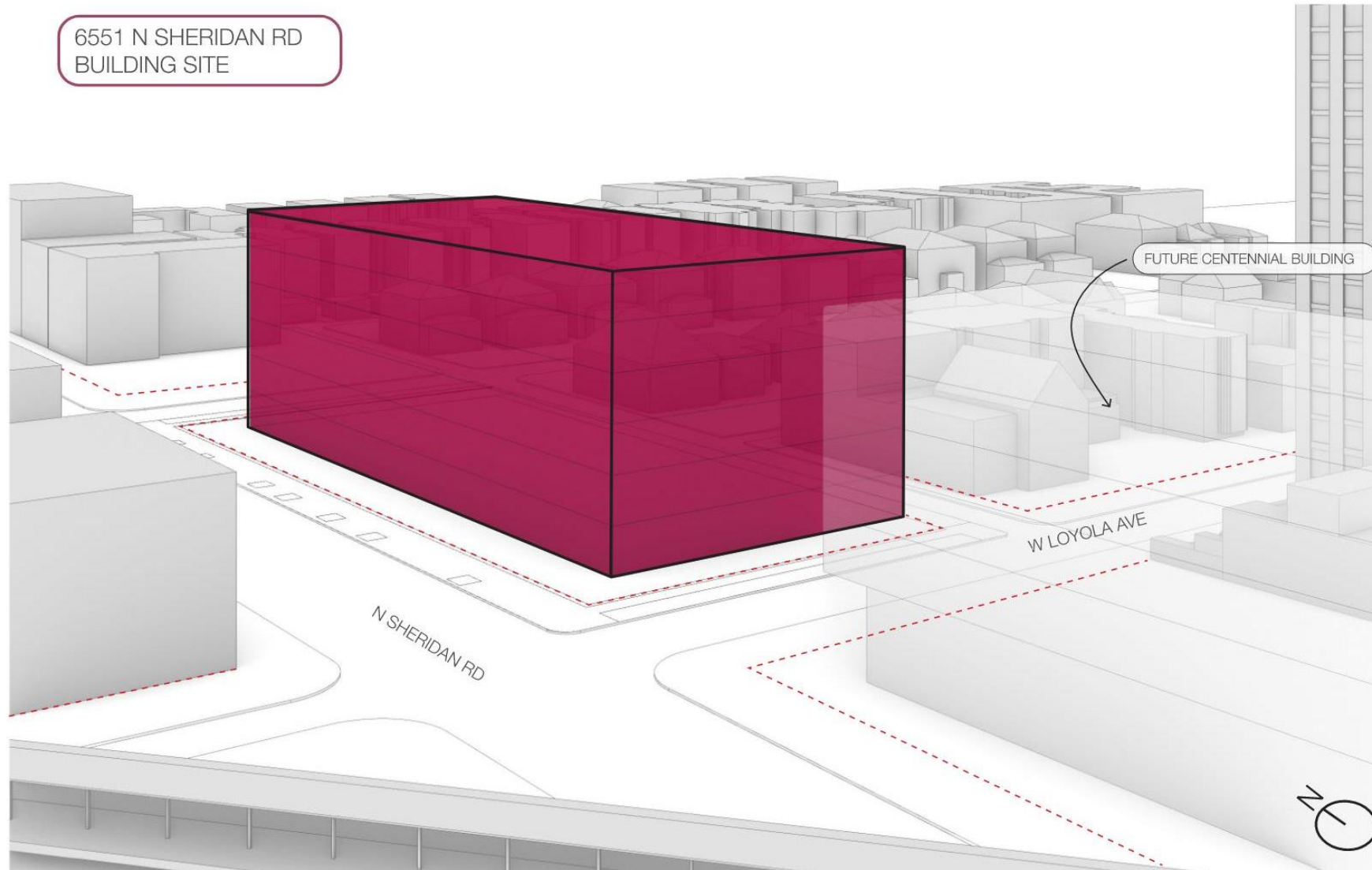
N SHERIDAN RD

70'-0"



- MAX FAR
- 196,000 GSF
- 6 FLOORS
- SETBACK FOOTPRINT
- 32,400 GSF
- 90'-0" HEIGHT
- ROOFTOP EQUIPMENT AND OPTIONAL ROOFTOP SCREEN NOT SHOWN

6551 N SHERIDAN RD
BUILDING SITE

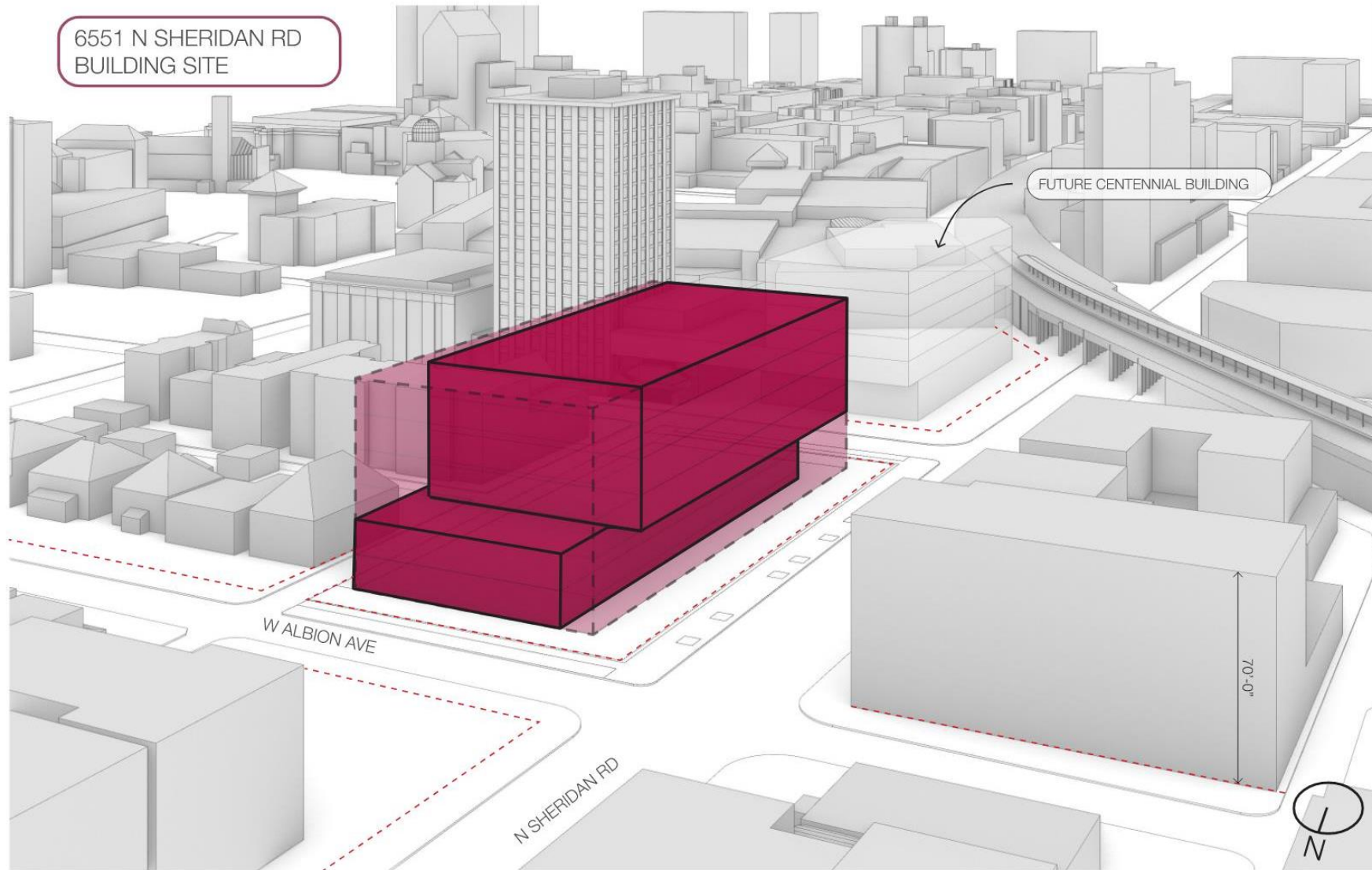


FUTURE CENTENNIAL BUILDING

W LOYOLA AVE

N SHERIDAN RD

MAX FAR
196,000 GSF
6 FLOORS
SETBACK FOOTPRINT
32,400 GSF
90'-0" HEIGHT
ROOFTOP EQUIPMENT
AND OPTIONAL ROOFTOP
SCREEN NOT SHOWN



6551 N SHERIDAN RD
BUILDING SITE

